

OLIS-K Extrusion

Ref. A04195



- Illuminated, recessed skirting board
- Masking the expansion joints between the wall and the floor
- Masking gaps on uneven surfaces
- Recess easily accessible for robotic vacuum cleaners
- Space for cable management
- Easy assembly

APPLICATION

- warning and decorative lighting
- function of a standard skirting board

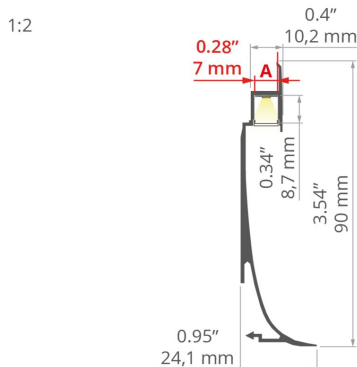
MOUNTING

- recessed, with mounting adhesive
- can be easily connected into runs and systems

ADDITIONAL INFORMATION

- the use of a dedicated connection strip C24009C10 at the back of the extrusion is suggested to prevent slits between individual sections of the extrusion when connecting runs and facilitates the routing of cables
- standard lengths of KLUŚ profiles and covers: 1000 mm (tolerance ± 1.5 mm) and 2005 mm / 3010 mm (tolerance ± 5 mm); for selected covers: 6050 mm, 10050 mm (tolerance ± 5 mm)
- when choosing a different length of profiles / covers than available in the standard, you should additionally choose the cutting service at KLUŚ

TECHNICAL DRAWING

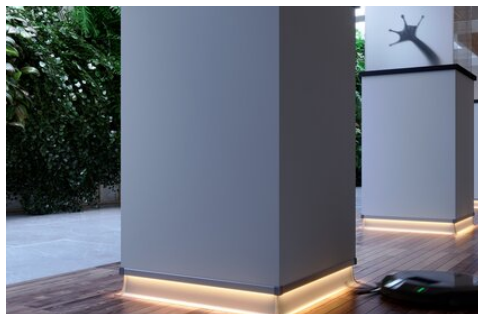
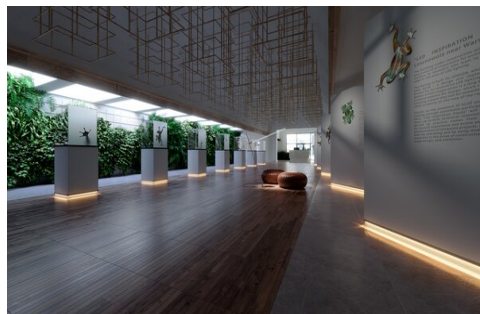


TECHNICAL SPECIFICATIONS

Material	aluminum
Possible fixture IP	20, 65
Possible fixture shapes	linear, polygonal
Width	0.9"
Height	3.5"
LED gluing width A	0.3"
Max power of a single KLUŚ LED strip	4.8 W/ft
Possibility of obtaining a line of light	yes
Building type	Residential, Hotel / Restaurant, Commercial, Obiekt kulturalno/rozrywkowy
Facility zone	communication routes and corridors, wall lighting
The cover is cut to the length of the profile	yes
Can be easily connected into runs	yes
Decorative lighting	yes
Functional lighting	yes
Mounting to drywall	yes
Wire out back of extrusion	yes

Color	Length	Ref
■ silver anodized	39.4"	A04195A_1
	78.9"	A04195A_2
	118.5"	A04195A_3
□ white lacquered	39.4"	A04195L10_1
	78.9"	A04195L10_2
	118.5"	A04195L10_3
■ black anodized	39.4"	A04195A07_1
	78.9"	A04195A07_2
	118.5"	A04195A07_3

SAMPLE PROJECTS



RELATED ACCESSORIES > COVERS

NAME	MATERIAL	MATERIAL TRANSMITTANCE	COLOR	REF.
BENCO-7 Cover	silicon	53 %	frosted	B17069F
PIKO-7 Cover	PMMA	17 %	black	B17001B
		43 %	satin	B17034S

RELATED ACCESSORIES > END CAPS

NAME	MATERIAL	COLOR	REF.
End cap OLIS-K-90Z	ABS	black	C24482L07
		gray	C24482C02
		white	C24482L10
End cap OLIS-K-90W	ABS	black	C24483L07
		gray	C24483C02
		white	C24483L10
End cap OLIS-K-L	ABS	black	C24484L07
		gray	C24484C02
		white	C24484L10
End cap OLIS-K-P	ABS	black	C24485L07
		gray	C24485C02
		white	C24485L10

RELATED ACCESSORIES > RELATED LED > CRI 90+

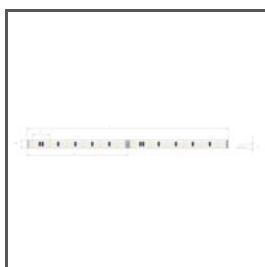


K-1091-24
K-1091-24



K-SHD-0960-24
K-SHD-0960-24

RELATED ACCESSORIES > RELATED LED > RGB / RGB-W / RGB-CTT



K-RGB-1560-24
K-RGB-1560-24

RELATED ACCESSORIES > OTHER ACCESSORIES > ADDITIONAL ITEMS



CONNECTING STRIP
OS
C24009C10