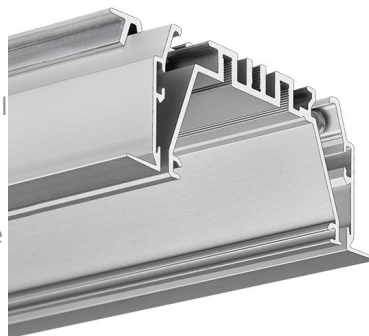


PRODUCT DESCRIPTION

The information contained in the description applies to the MOD-KOL-50 system (a set of **RAM-KOL-50**, **OMODO-50** extrusions).

- The open style structure of the mounting channel and its adjustable elements (bridges) eliminates the need for unsightly inspection openings in the ceilings
- The extrusion conceals the edges of the mounting gap in the drywall (no need to plaster and paint the surface after mounting)
- Repeated removal and remounting of the lighting fixture does not damage the ceiling
- A LED lighting fixture with a low glare rating UGR below 19 (with the prismatic JUN-50 cover)
- The extrusion can be mounted "from below" and thus build ceiling lighting fixtures that run "wall to wall"
- Either LED tapes or LED current modules can be used
- Linear and polygonal connections are possible with ZM connectors
- Secure mounting resistant to vibration



FINISH :

Silver anodized

Fill empty fields

Product nr.	
Fixture type	
Company	
Job name	
Date	

TECHNICAL SPECIFICATION

Application

- for the construction of professional lighting fixtures with a cover mounted flush with the ceiling or wall surface,
- for LED lighting fixtures recessed in the ceiling, installed and serviced as a system,
- for creating precise mounting channels in drywall for LED lighting fixtures (RAM-KOL-50),
- for building LED lighting fixtures capable of reaching a glare rating $UGR \leq 19$.

Mounting

- embedding the "mounting channel" (RAM-KOL-50) in the surface of a drywall ceiling using RAM-1 mounting springs,
- mounting the "core" of the lighting fixture (OMODO-50) in the "mounting channel" (RAM-KOL-50) with hooks locked with bolts.

Additional information

MOD-KOL-50 fixtures are designed for 3 LED tapes (10 mm wide) or 4 tapes (8 mm wide) or a LED current

module up to 24 mm wide.

The lighting fixture is designed so that the "core" of the lighting fixture (profile with LED tapes and end caps) can be prepared in advance, in factory conditions. The only thing to be done at the installation site is to insert the prepared "core" (OMODO-50) into the pre-installed mounting channel (RAM-KOL-50).

Two locking bolts must be used for every 39.4" (1 m) of lighting fixture. For lighting fixtures shorter than 39.4" (1 m), at least 2 bolts must be used.

The width of the gap in the drywall for RAM-KOL-50: from 66 mm to 71 mm.

The following are examples of covers are compatible with MOD-KOL-50:

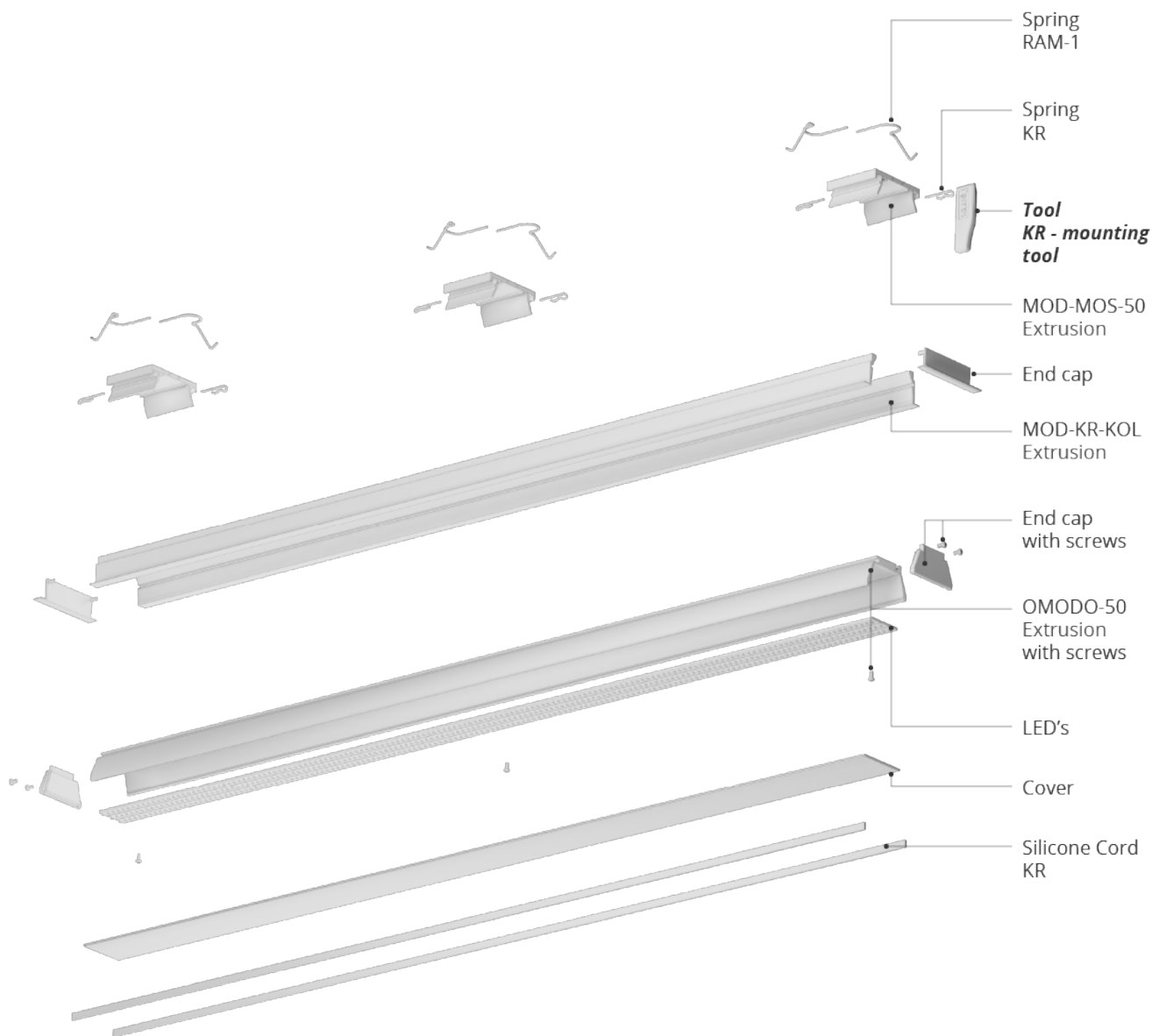
- **JUN-50** prismatic material: PMMA, length: 59" (1.5 m), UV resistant, glare rating UGR \leq 19 possible
- **POL-50** frosted, material: PC, lengths: 39.4" (1 m), 78.7" (2 m), 118.11" (3 m), UV resistant

The gaps between the edges of the mounting channel and the "core" of the fixture can be finished with a dedicated silicone cord.

span {font-weight:600;}

Animation:Extrusion system MOD-KOL-50

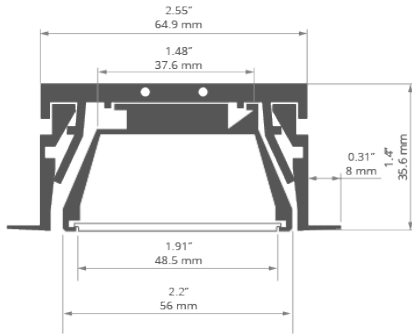
Scheme: Extrusion system MOD-KOL-50



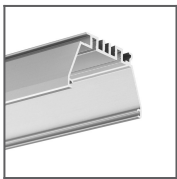
AVAILABLE LENGTHS

Ref. nr.	surface finish	available lengths
----------	----------------	-------------------

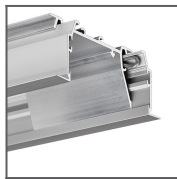
TECHNICAL DRAWING



RELATED EXTRUSIONS



OMODO-50
Extrusion
Ref: 18053

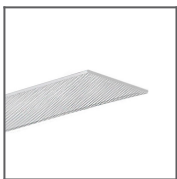


RAM-KOL-50
Extrusion
Ref: 18060

RELATED PRODUCTS

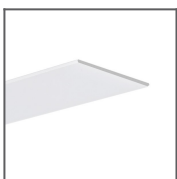
COVERS

CLEAR COVERS



JUN-50 Prismatic
cover
Ref: 17056_1.5

FROSTED COVERS



POL-50 frosted
Cover
Ref: 17058

END CAPS

REGULAR END CAPS



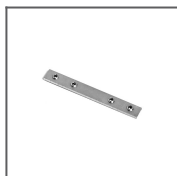
OMODO-50 grey
End cap
Ref: 24353



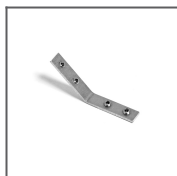
RAM-KOL-50
grey End cap
Ref: 24355

ACCESSORIES

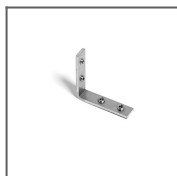
COMPONENTS FOR CONNECTING FIXTURES



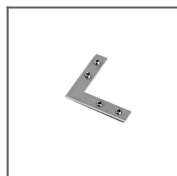
ZM-180
Connector
Ref: 42717



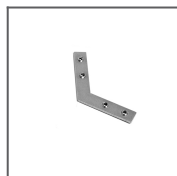
ZM-PION-135
Connector
Ref: 42719



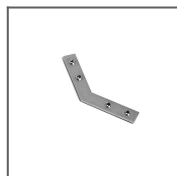
ZM-PION-90
Connector
Ref: 42718



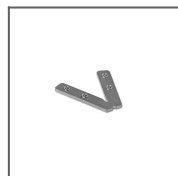
ZM-90 Connector
Ref: 42716



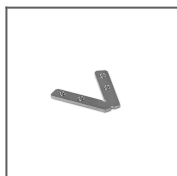
ZM-120
Connector
Ref: 42728



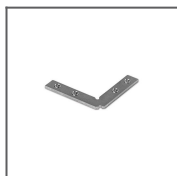
ZM-135
Connector
Ref: 42720



ZM-45-G
Connector
Ref: 42338



ZM-60-G
Connector
Ref: 42304



ZM-90-G
Connector
Ref: 42306



ZM-135-G
Connector
Ref: 42310



ZM-PION-45
Connector
Ref: 42314



ZM-PION-120
Connector
Ref: 42320



ZM-120-G
Connector
Ref: 42308

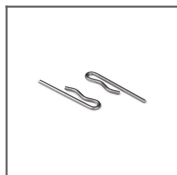
ADDITIONAL ITEMS



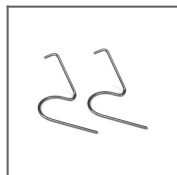
6x1.2 Gland
Ref: 00802



DES Gland
Ref: 42265M8X1



KR Spring
Ref: 42737



RAM-1 Spring
Ref: 42738



Mounting wedge
Ref: 70397



KR Tool
Ref: 70449