

CREATIVE LED SOLUTIONS

*get inspired*



## We will turn your vision into reality

Do you have unique ideas?

Are you looking for technical solutions for your LED lighting projects?

We will select products that meet your needs and will advise you on the selection of our profiles, mounting accessories, LED tapes and electronics. We have IES and LDT photometric files and can also provide 3D models, which facilitate design and accelerates the conceptual phase.



Suspended LED fixtures

4

Recessed LED lighting fixtures

26

LED lighting fixtures recessed into the surface

34

Accent and decorative lighting

42

Functional lighting

54

Lighting integrated with a stretch ceiling

60

Draw a shape.  
KLUS will transform it into a luminaire.



#### MIFOR

Creating lighting according to the sketch of an architect or investor.  
Building fixtures with rounded or polygonal shapes from ready-made elements.







Use subtle, individualized lighting  
when designing large spaces







GIZA-DUO-LL

Bi-directional lighting.  
Good bending parameters.

## Effective light compositions from miniature LED fixtures









#### PIKO-ZM

Very small size  
(only 10 mm / 0.39" wide).  
Ability to bend or build light  
strings (with ZM connectors).

## Smooth transition of a recessed lighting fixture into a suspended one



**PDS-T**

The profile height is within the thickness of one 12.5 mm / 0.49" drywall board.



### PDS-ZM-PLUS

The PDS-ZM-PLUS profile is compatible with the PDS-T profile, which enables the effective transitioning of suspended lighting fixtures into recessed fixtures.

## Effective lighting fixture for creating suspended light compositions

### JAZ-DUO

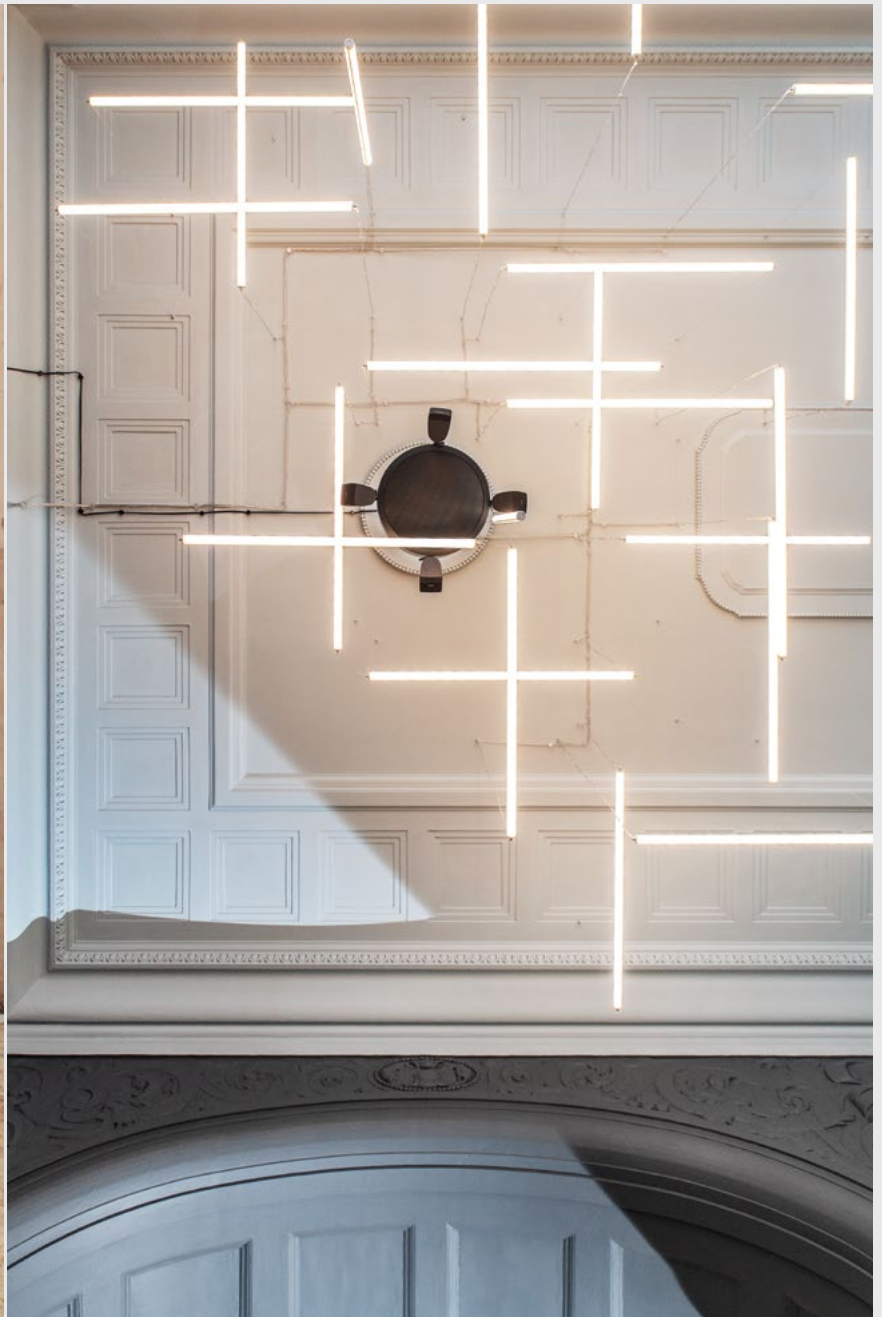
Bi-directional lighting (two-sided line of light).  
Possibility to mount vertically, horizontally or diagonally.











### JAZ-DUO

Bi-directional lighting (two-sided line of light).  
Possibility to mount vertically, horizontally or diagonally.

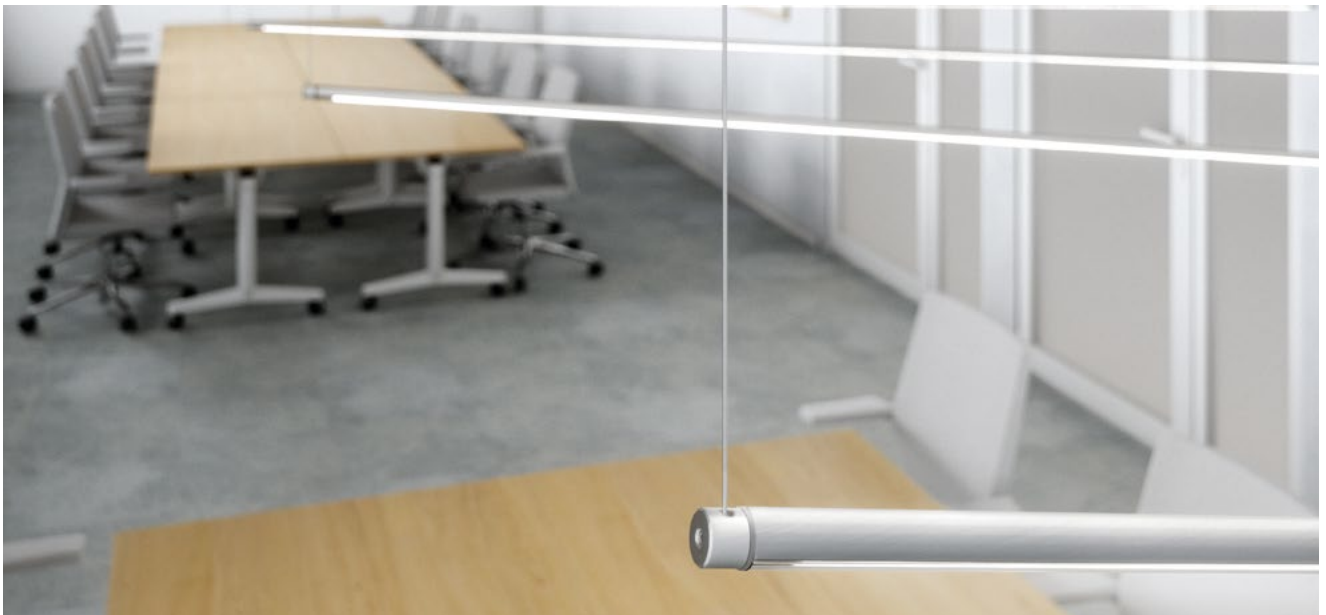
A narrow, subtle line of light  
in a round, miniature frame



PIKO-O

Smooth exterior walls for a modern look.  
Easy bending of the profile.

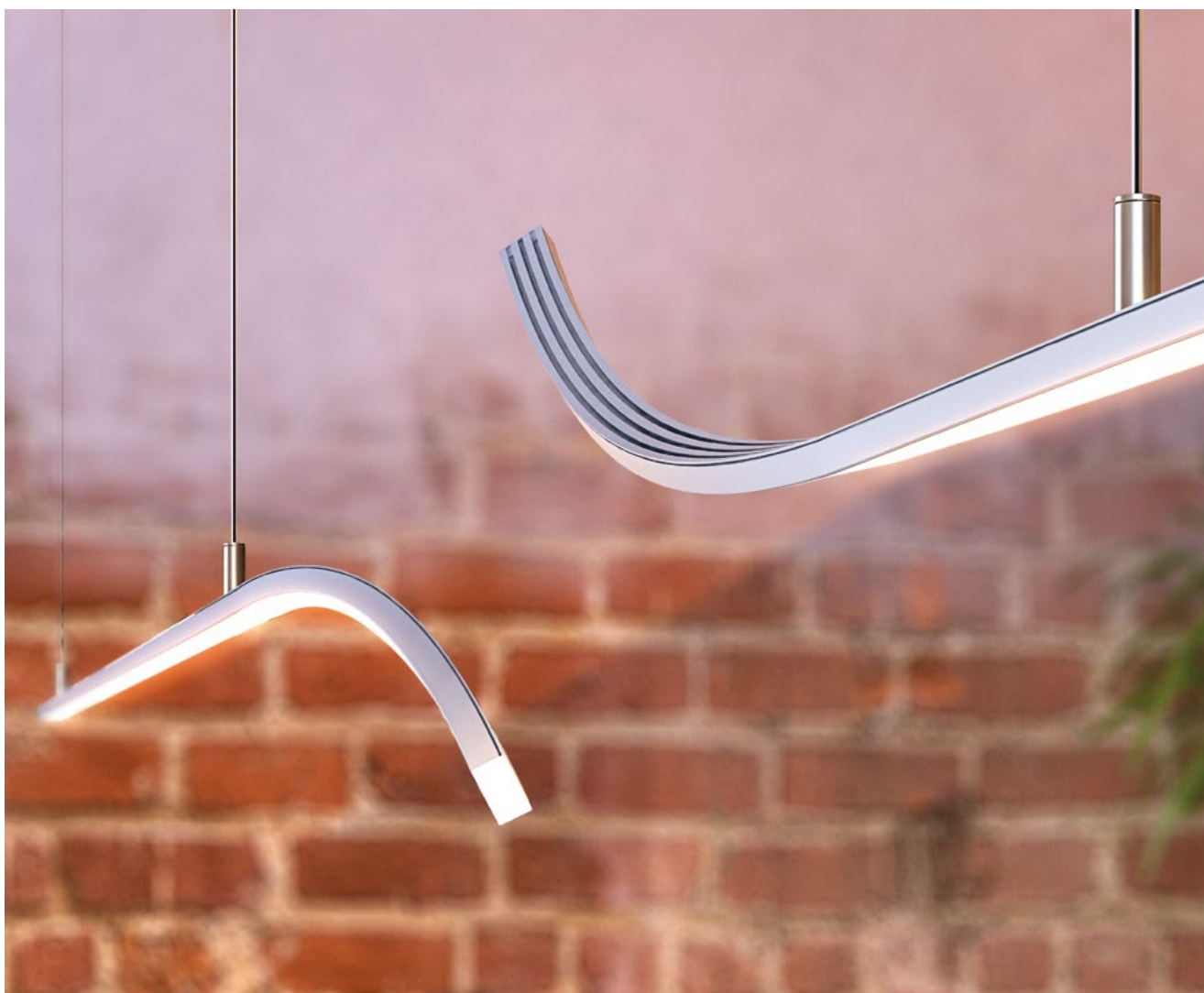


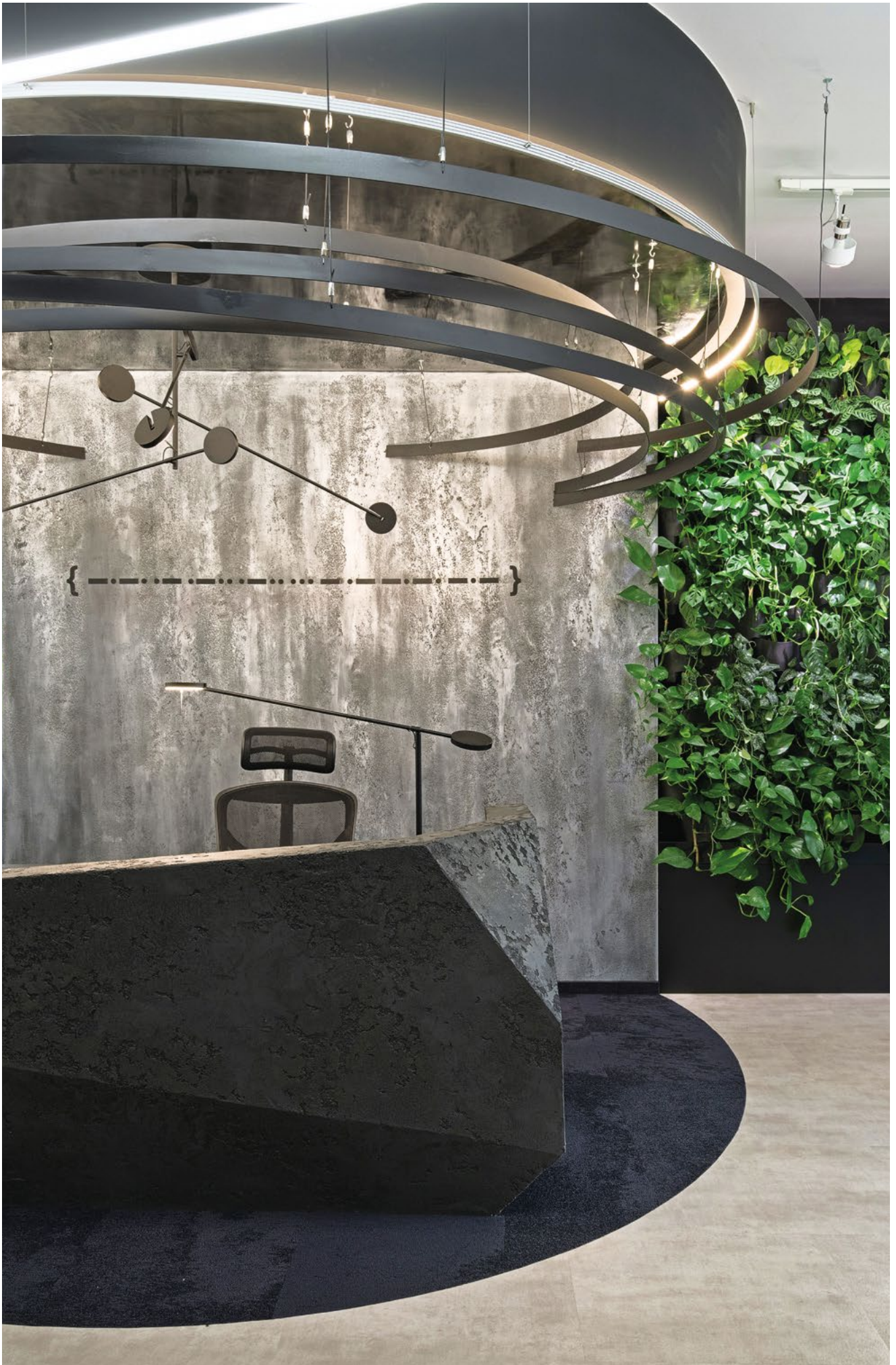


## Light and elegant compositions with bent lines of light

### GIZA-LL

Line of light in a shallow extrusion and flat cover.  
A wide range of available accessories.



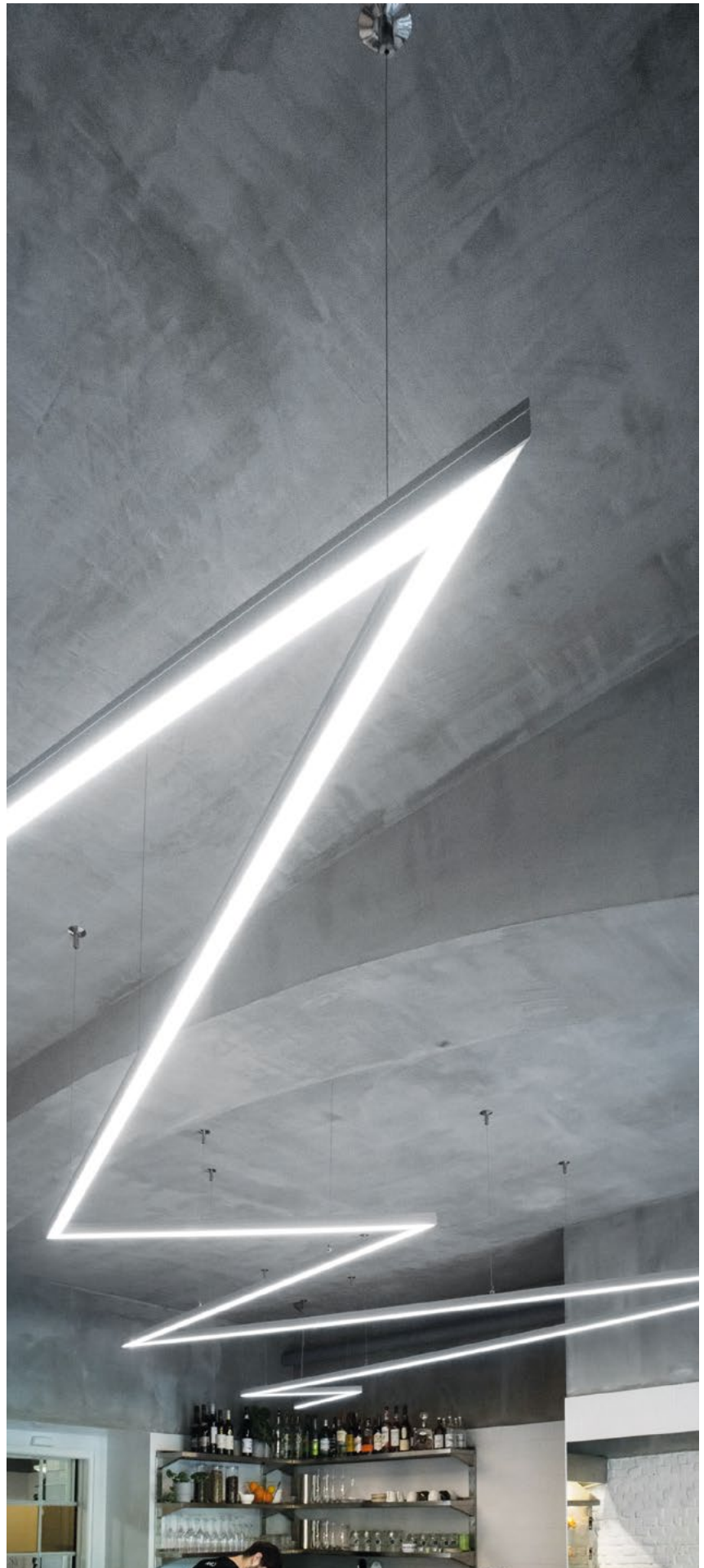


Callstack, Wrocław  
design: We.make  
photography: Tom Kurek

Compose lighting  
fixtures with  
geometric shapes,  
suspended  
or mounted  
to the surface

3035

Mounting strip facilitates mounting  
and running cables.  
Lighting fixtures can be combined  
to form runs of light.



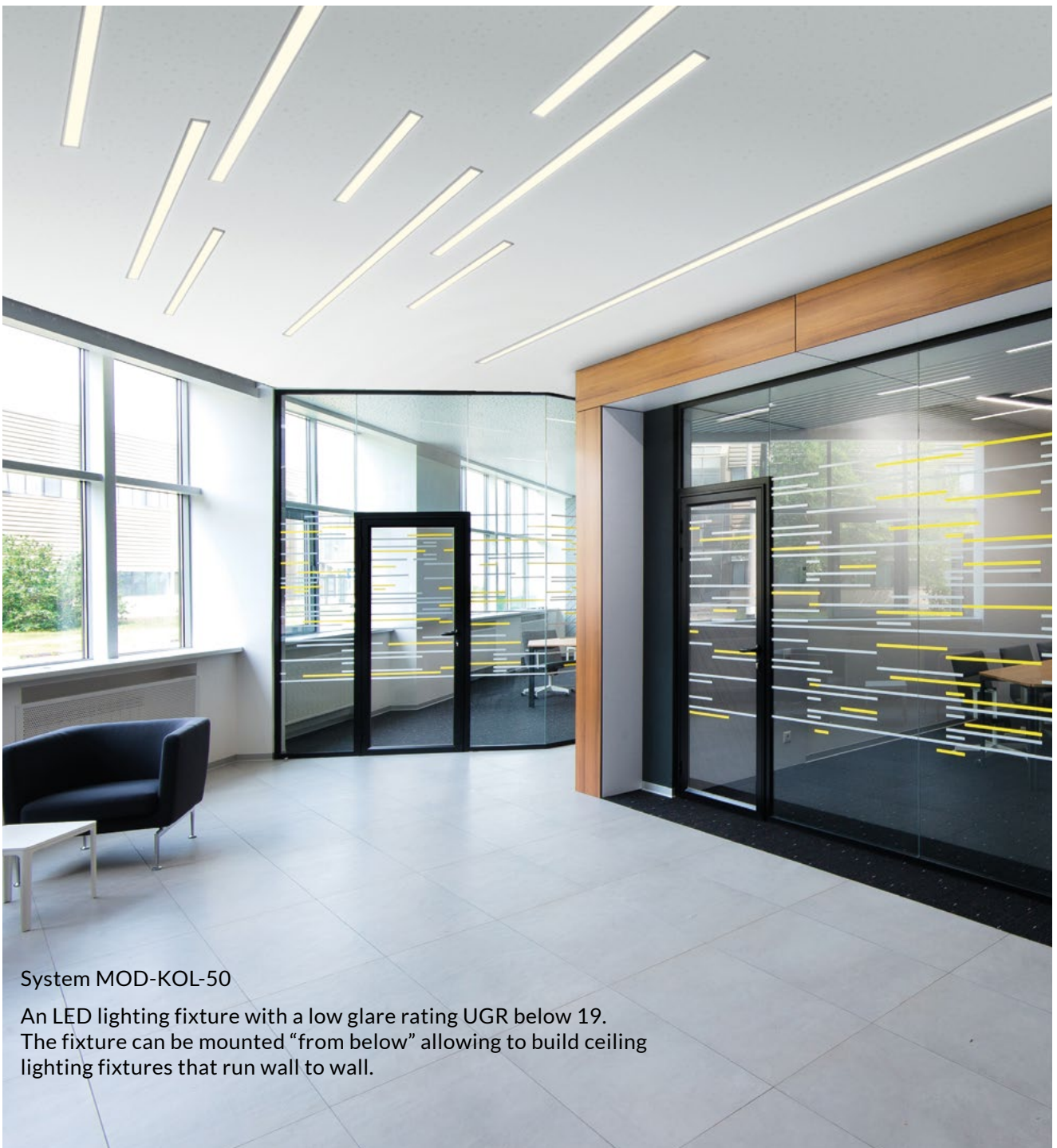




## DES

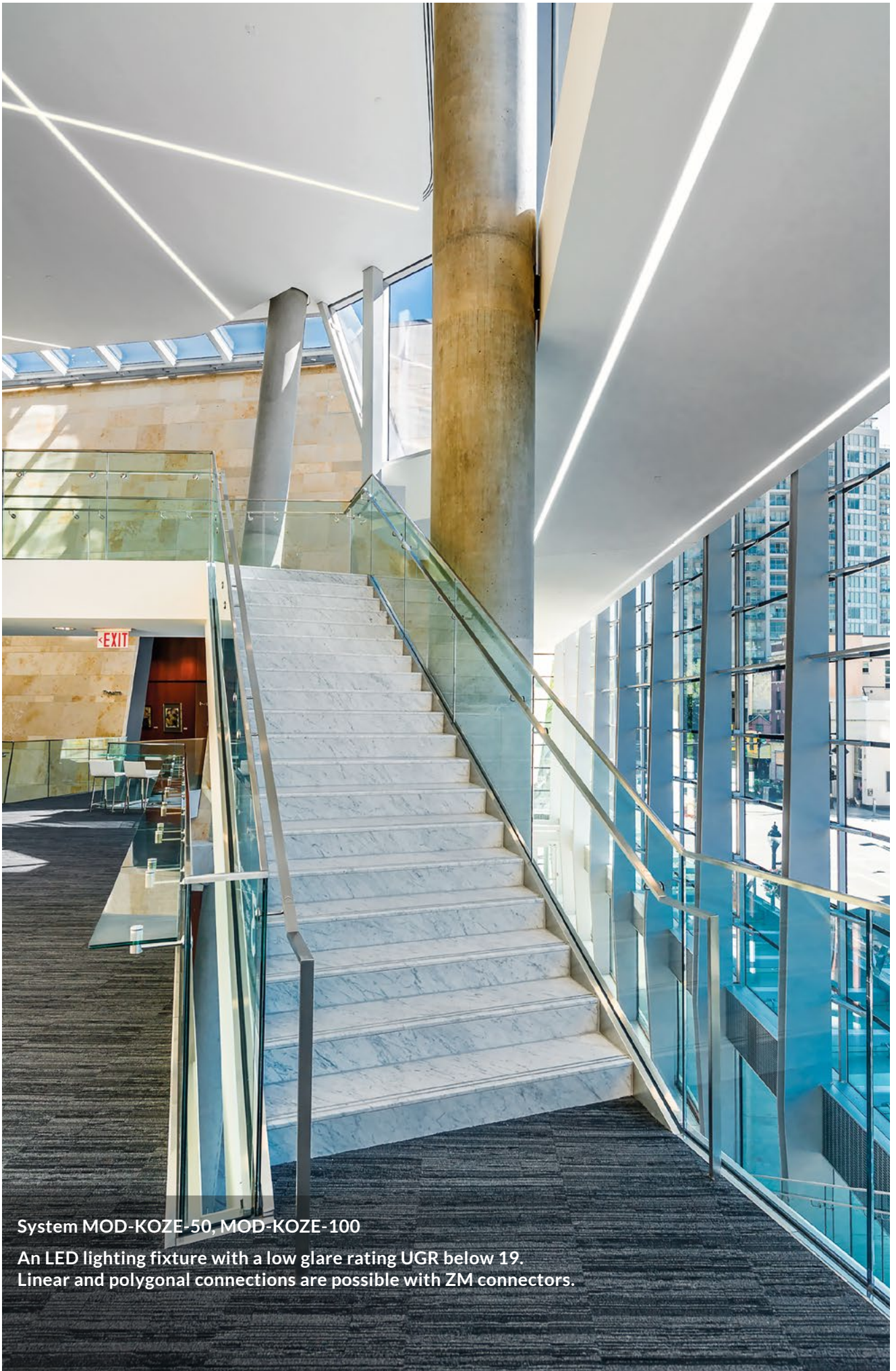
Suspended lighting fixture with mounting strip.  
Directs light up and down.

## Keep ceilings aesthetically clean, without inspection openings



System MOD-KOL-50

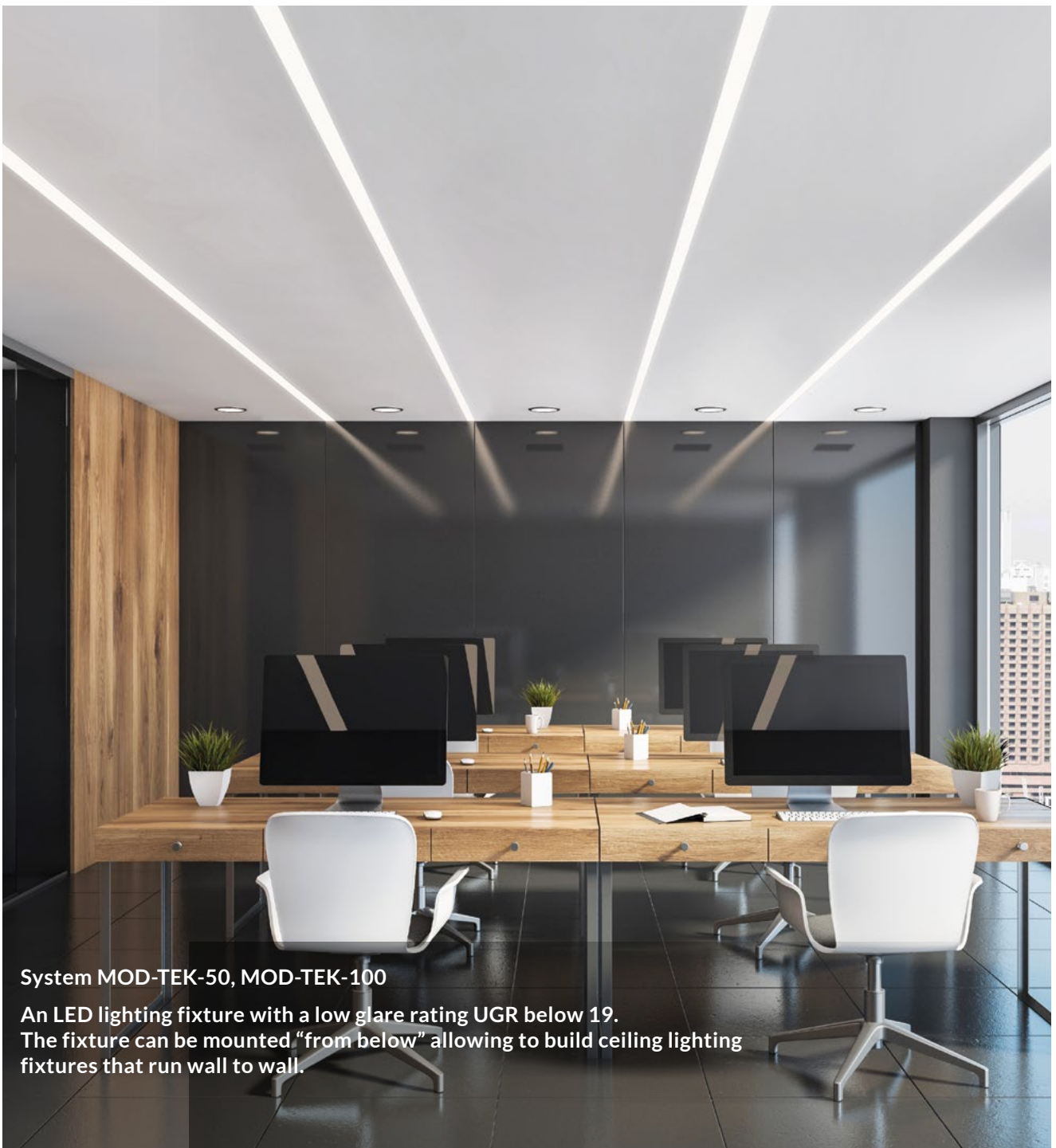
An LED lighting fixture with a low glare rating UGR below 19.  
The fixture can be mounted “from below” allowing to build ceiling  
lighting fixtures that run wall to wall.



System MOD-KOZE-50, MOD-KOZE-100

An LED lighting fixture with a low glare rating UGR below 19.  
Linear and polygonal connections are possible with ZM connectors.

## Recessed lighting fixtures with low glare factor



System MOD-TEK-50, MOD-TEK-100

An LED lighting fixture with a low glare rating UGR below 19.  
The fixture can be mounted "from below" allowing to build ceiling lighting fixtures that run wall to wall.



**System MOD-KOL-100**

An LED lighting fixture with a low glare rating UGR below 19.  
It allows to keep aesthetically clean ceilings without revisions.

Stand out! Create intriguing designs thanks to the narrow, recessed lines of light



**KOZEL-10**

Very small size (fits in a slot 8 mm / 0.31" deep by 12 mm / 0.47" wide).  
Lighting fixtures can be combined into long runs using ZM connectors.



Narrow lines of light that emphasize  
the original geometry of the interior



OPK-4

Line of light in the recessed lighting fixture,  
without visible aluminum elements.  
Lighting fixtures can be combined to form  
lighting strings (ZM connectors).







Hatch Chisholm Creek, Oklahoma  
design: Fitzsimmons Architects,  
photography: Joseph Mills

## Do you want to liven up your floors? Do it with linear LED lighting



HR-ALU

Designed to reach an IP67 waterproof rating.  
Resistant to standard loads expected for floors.

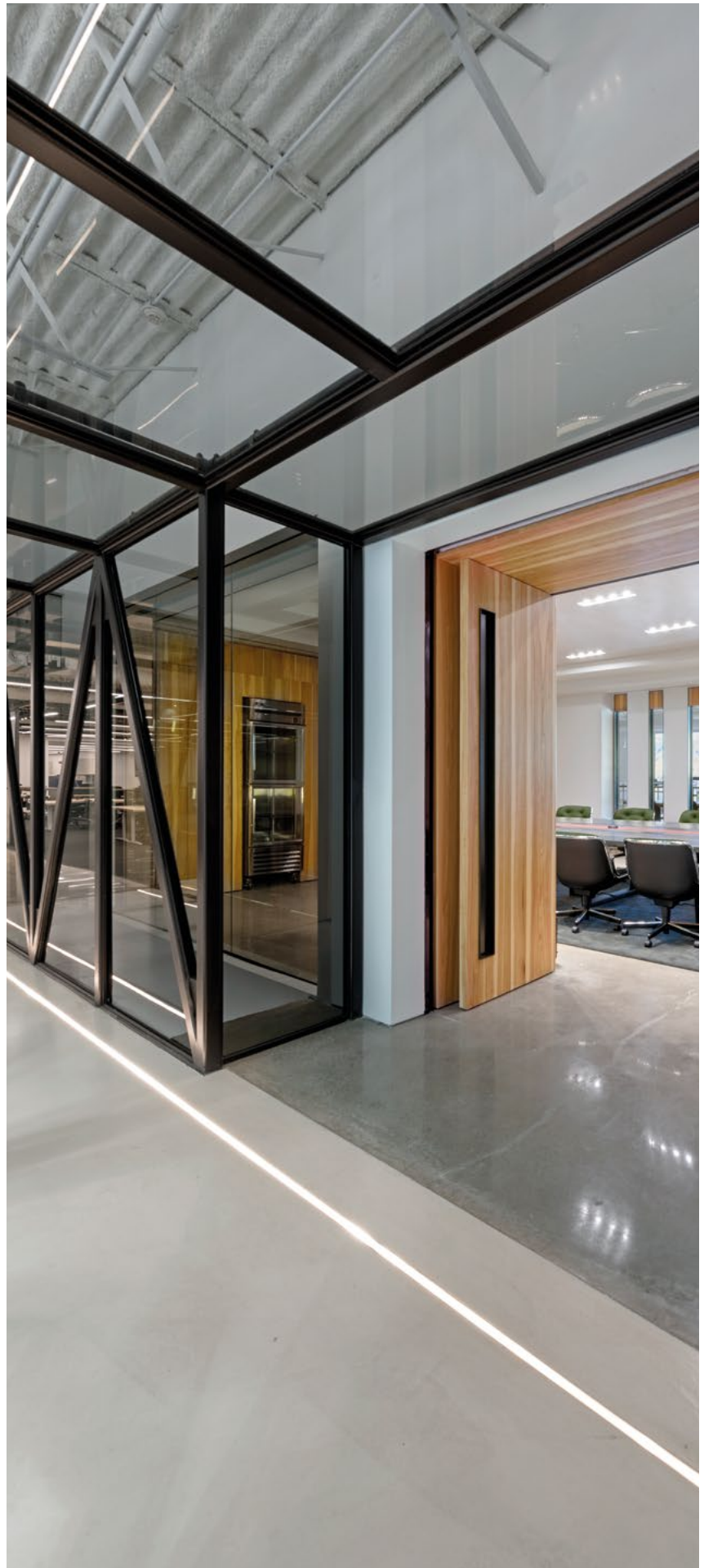


Saks Fifth Avenue, New York  
lighting design: 37 Volts Light Studio

LED system  
solutions  
for driveways,  
parking lots,  
passageways,  
floors

HR-LINE

Possibility of making a linear  
fixture with IP68 protection.  
Designed to reach IK10 degree  
of protection against mechanical  
impact.





Coworks, New York  
design: Leeser Architecture

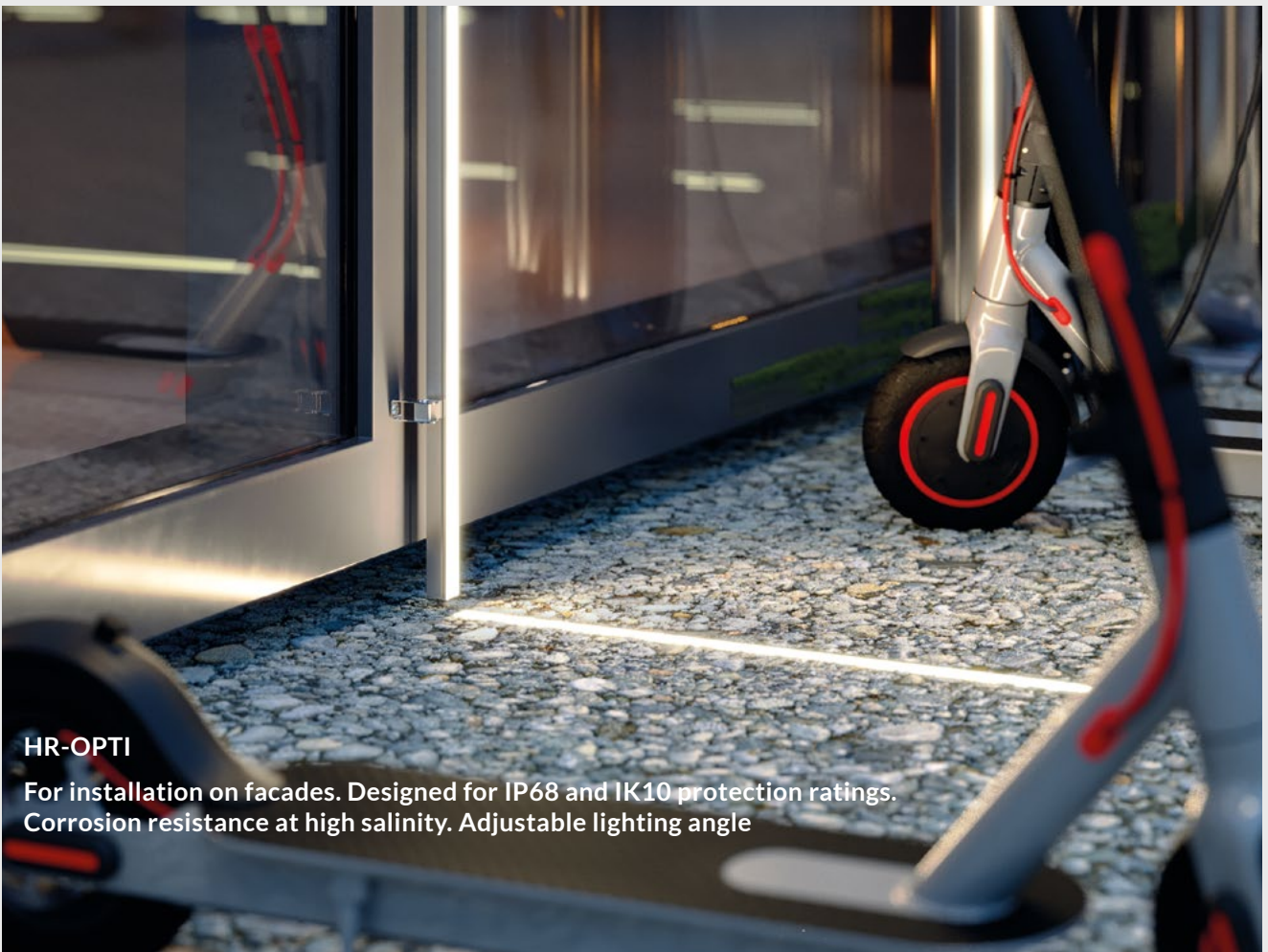
## Modern lighting system for ground and facades



HR-MAX

Designed for IP68 and IK10 protection ratings. Corrosion resistance at high salinity. Corresponds to the width of the HR-OPTI facade system.





**HR-OPTI**

For installation on facades. Designed for IP68 and IK10 protection ratings. Corrosion resistance at high salinity. Adjustable lighting angle



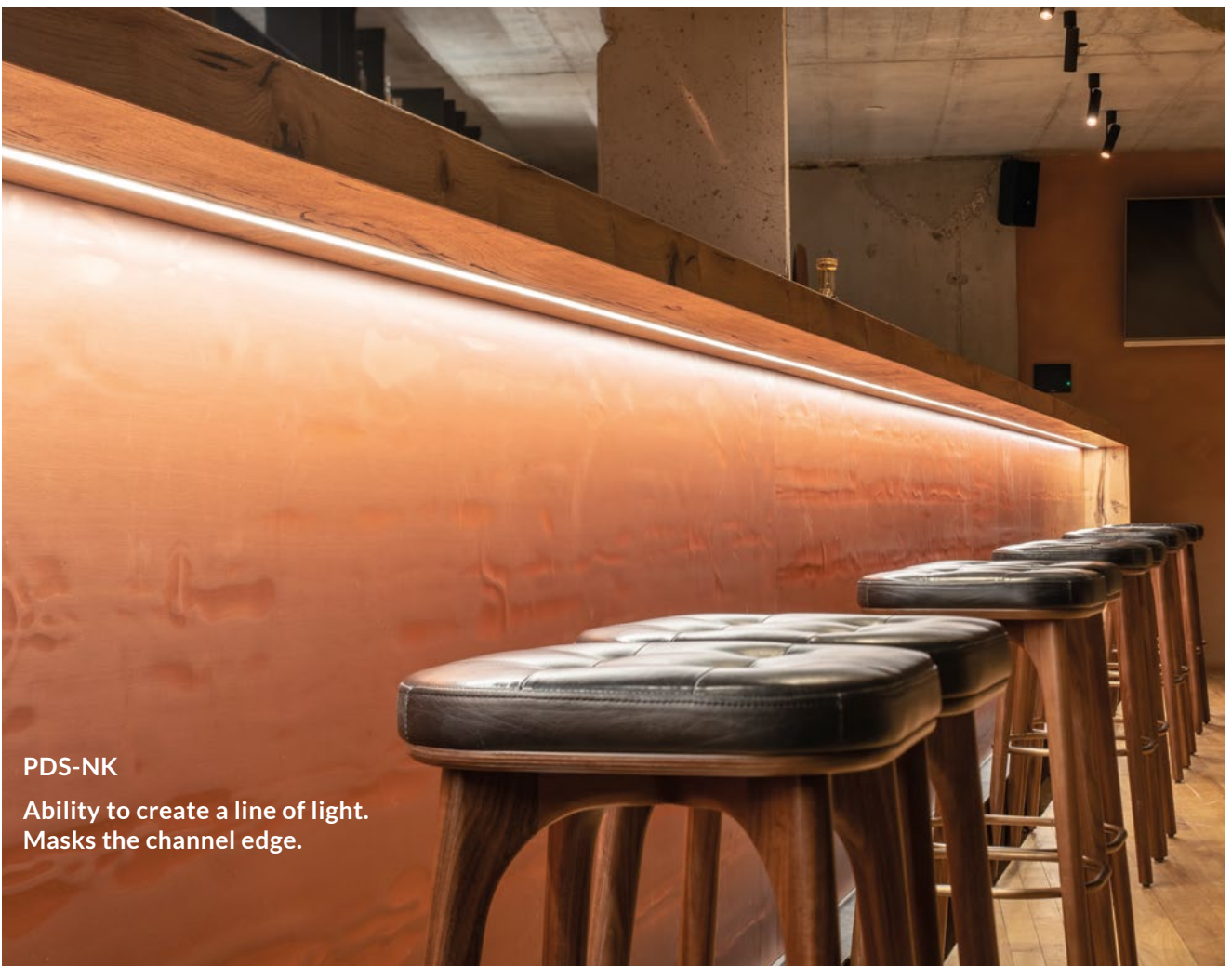
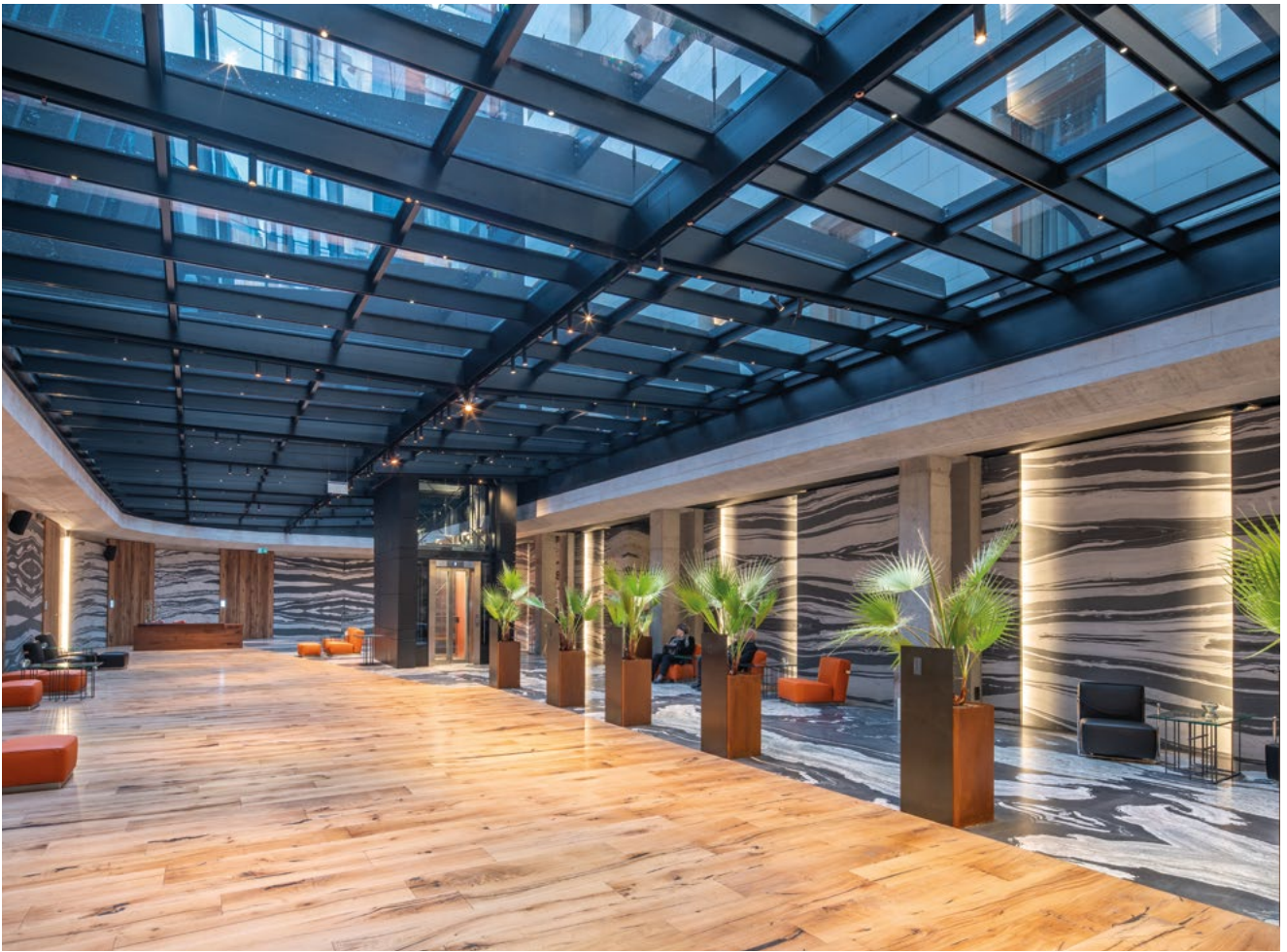


Create lighting  
that will  
emphasize the  
texture and color  
of the materials  
used

#### 45-ALU

The fixture directs light  
at a 45-degree angle.  
Ability to create a line of light.

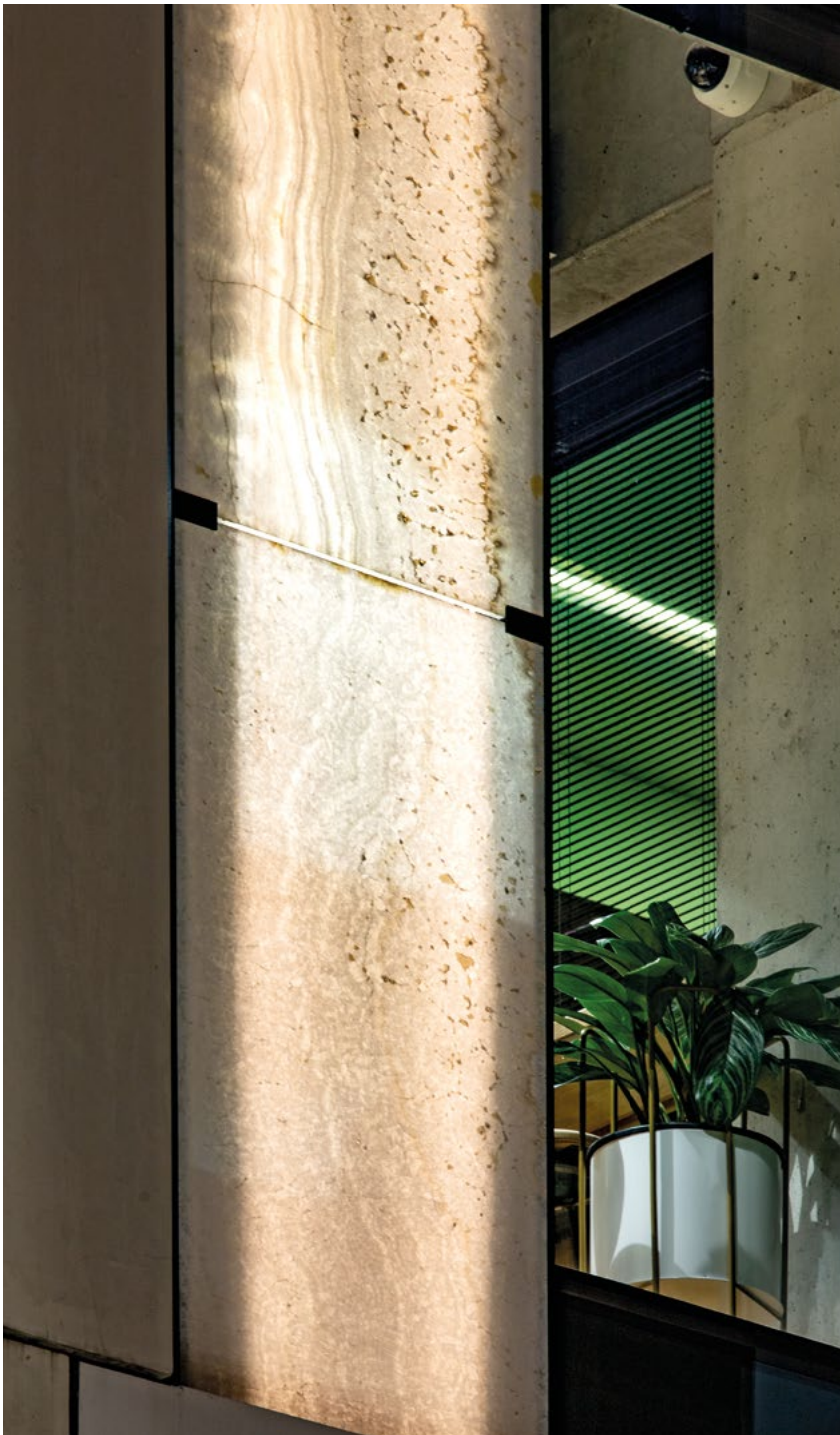




PDS-NK

Ability to create a line of light.  
Masks the channel edge.

## Lighting for outdoor use with simple system assembly





**PDS-4-PLUS**

Designed to reach an IP67 waterproof rating.  
Multiple additional accessories.



**PDS-4-PLUS**

Designed to reach an IP67 waterproof rating.  
Multiple additional accessories.



Monarch Building, Oklahoma  
design: Fitzsimmons Architects,  
photography: Justin Miers Photography

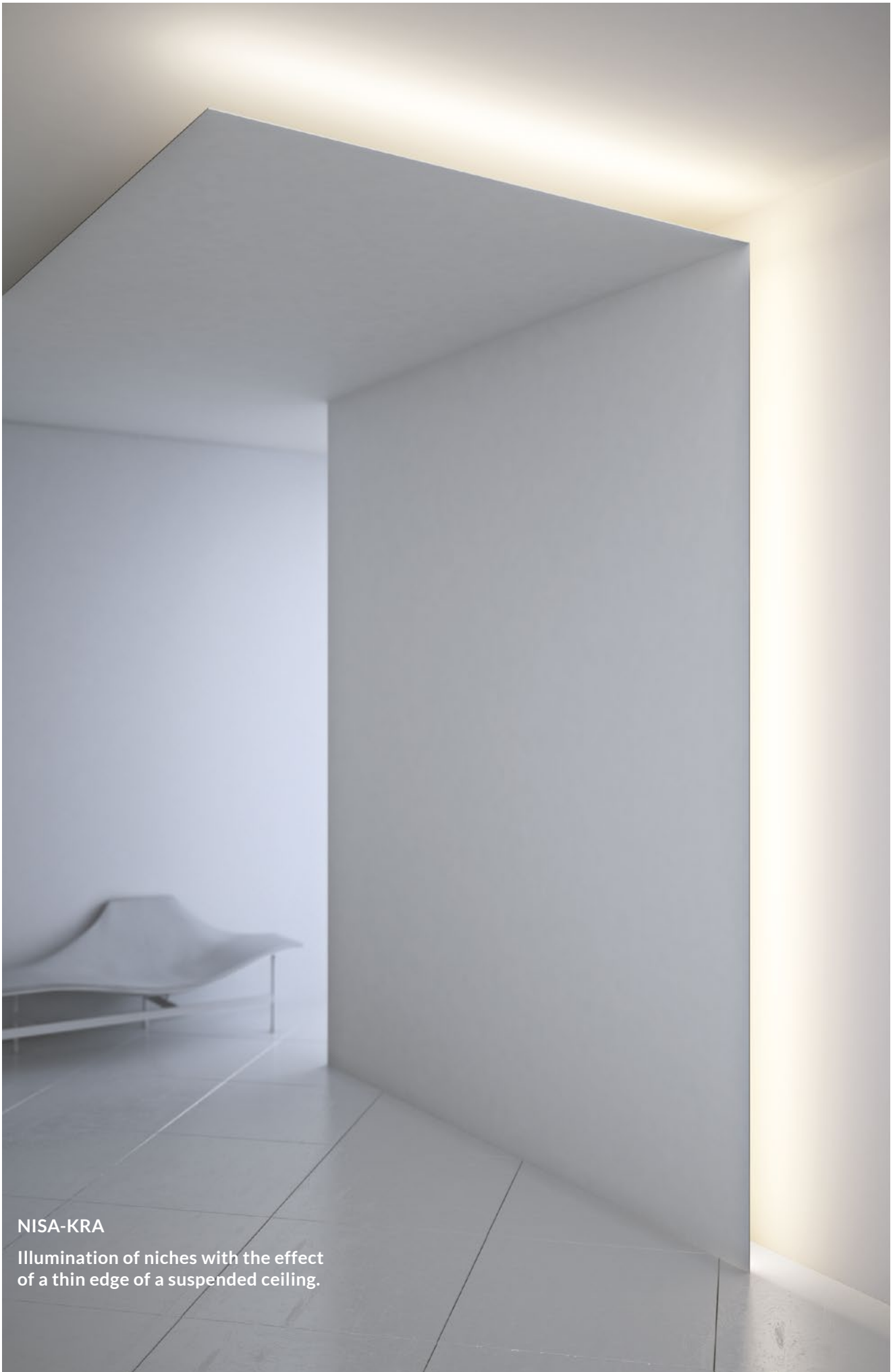
**Illuminate the interior  
in a sophisticated way**

**POLI**

Installation in tight spaces.  
Infinitely variable adjustment  
of the lighting angle.



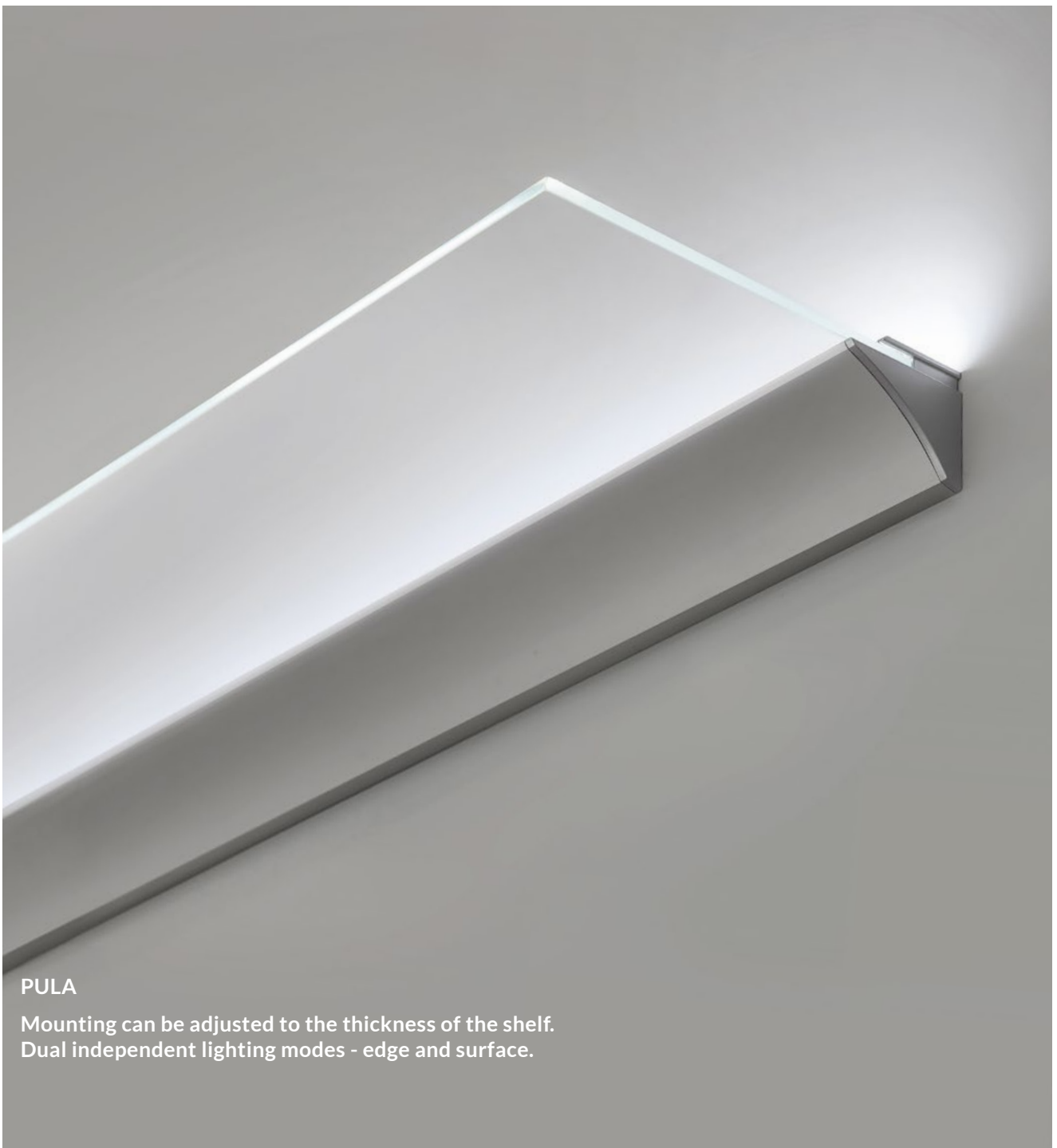




NISA-KRA

Illumination of niches with the effect  
of a thin edge of a suspended ceiling.

Enrich the interior with interesting accents,  
highlighting the edges of glass or plastic



PULA

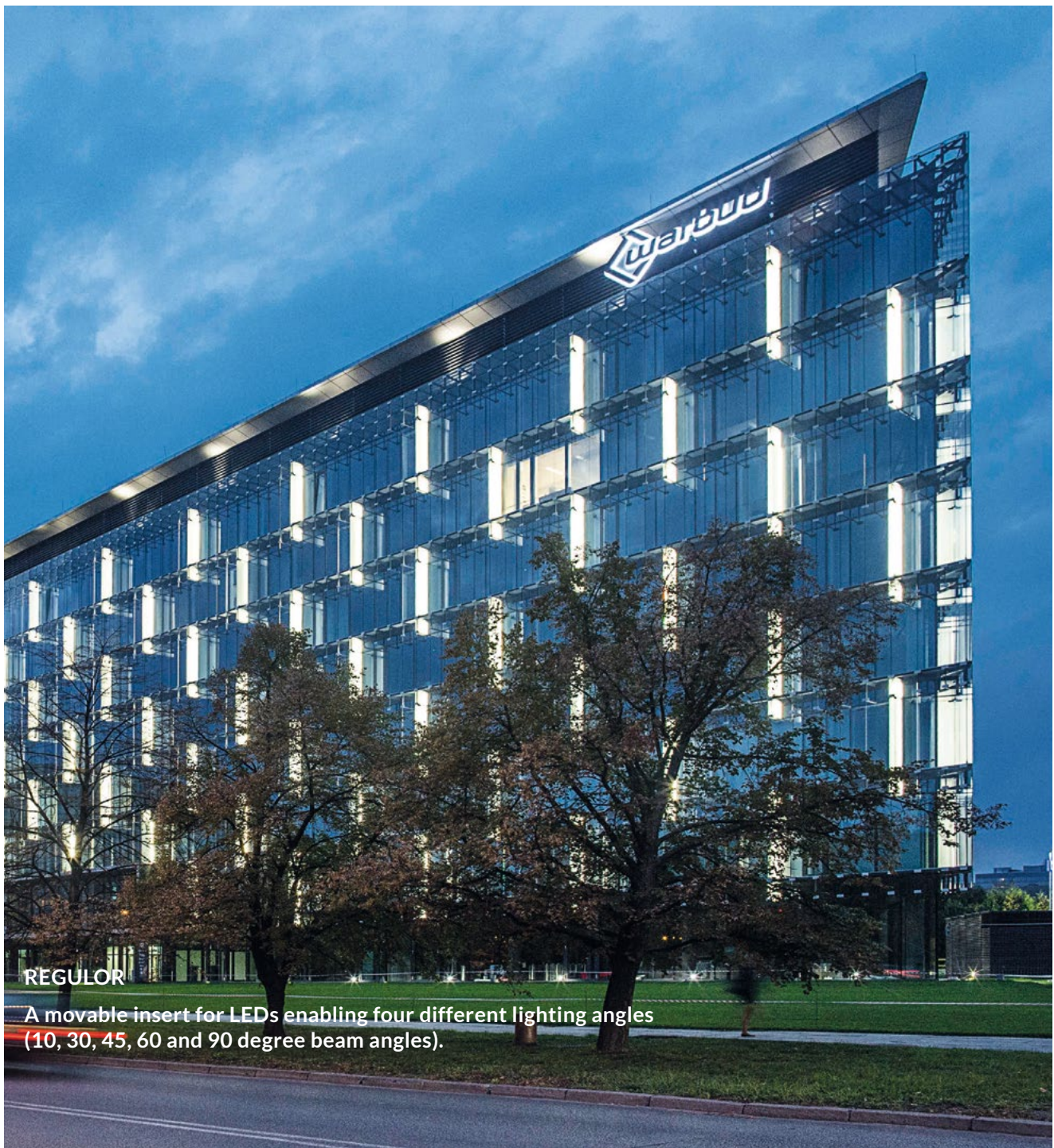
Mounting can be adjusted to the thickness of the shelf.  
Dual independent lighting modes - edge and surface.



KRAV-56, KRAV-810

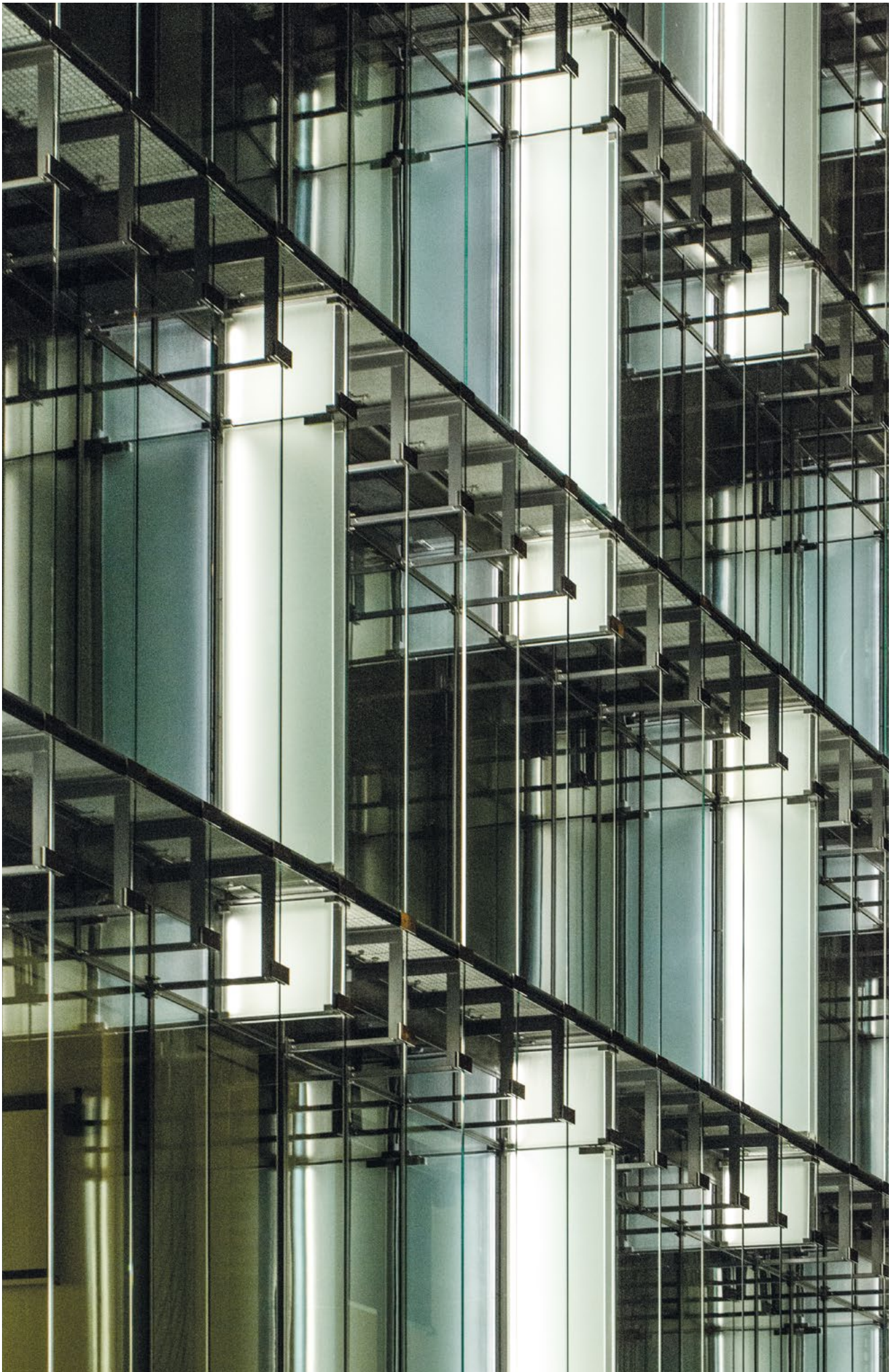
Edge illumination of transparent  
and frosted panels.

Achieve the desired illumination effect  
by adjusting the light distribution angle



**REGULOR**

A movable insert for LEDs enabling four different lighting angles  
(10, 30, 45, 60 and 90 degree beam angles).



Functional LED lighting  
concealed in the handrail





POR

Recessed Handrail lighting. Easy snap-in installation.

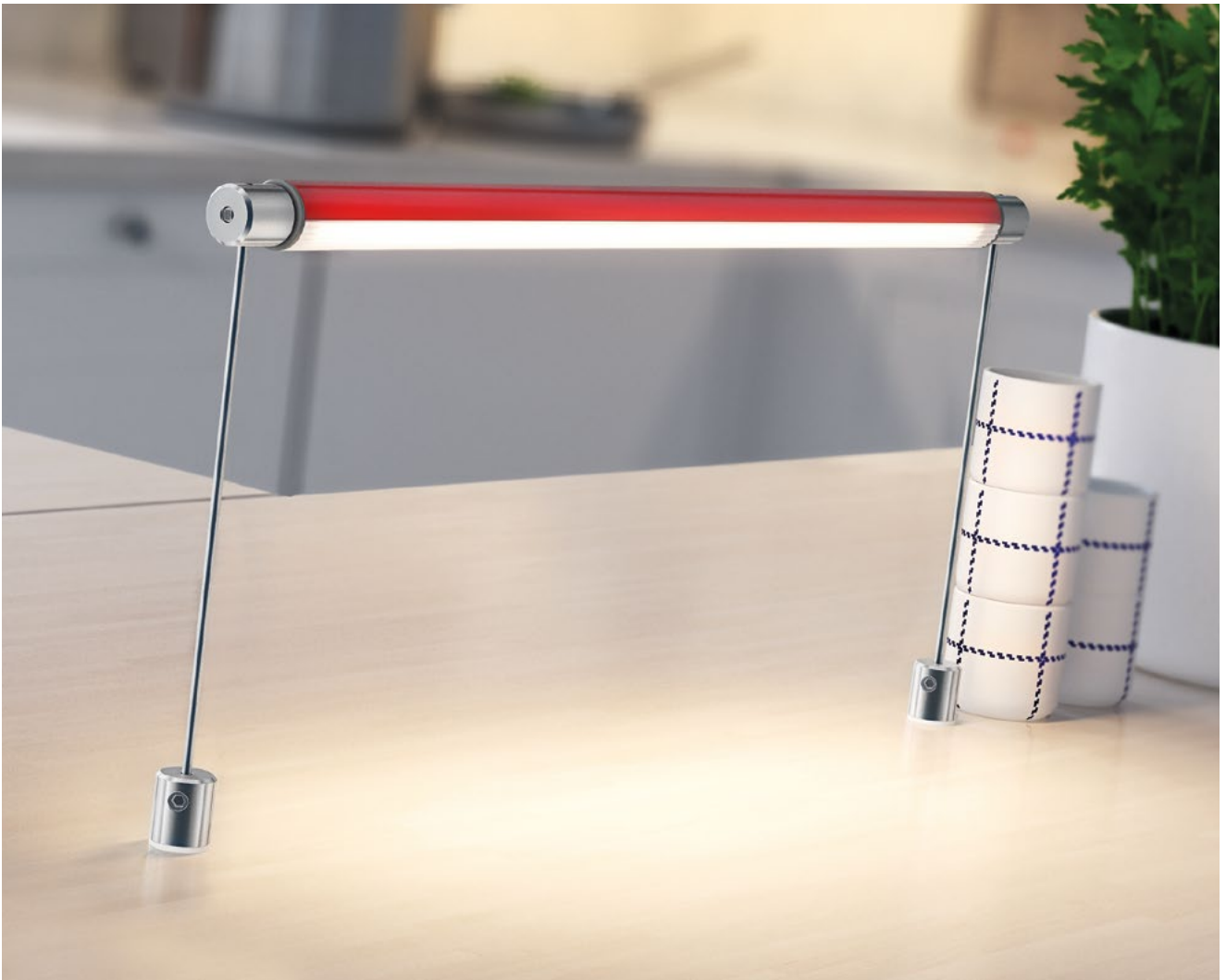
Modern LED lighting fixtures with no visible wires,  
adjustable 360 degrees



**OLEK**

Possibility of creating a light fixture with a circular cross-section (LUK cover). Smooth walls ensure modern aesthetics.



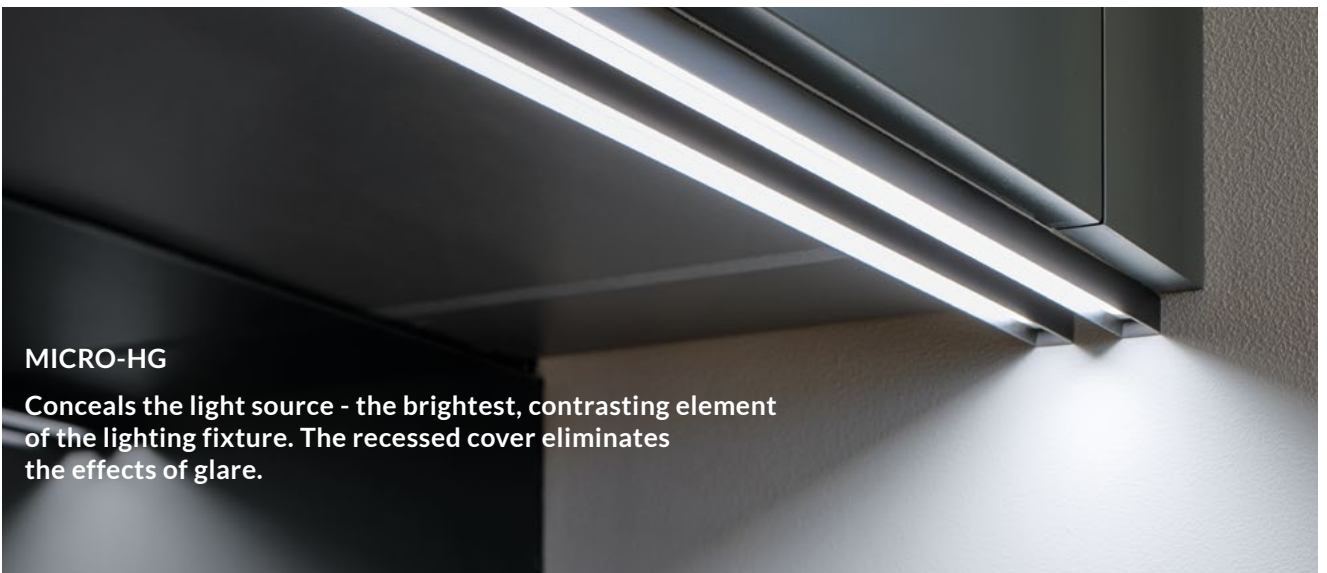


Conceal the light source, increasing the comfort of users

45-16

The profile directs the light at a 45-degree angle.  
Small dimensions (16 mm / 0.62" x 16 mm / 0.62")





**MICRO-HG**

Conceals the light source - the brightest, contrasting element of the lighting fixture. The recessed cover eliminates the effects of glare.

## Lighting of showcases, displays and shop windows



KUBIK-45

Create illuminated skeletal forms.



PIKO

Narrow line of light.  
Minimum width and depth.

## Combine stretch ceilings with LED linear lighting



FOLED-SUF

Combines two functions: lighting fixture  
and frame for a stretched ceiling.



## FOLED

Combines several functions: lighting fixture, frame for a stretched ceiling or frame for a suspended ceiling made of plasterboard.



## **KLUŚ USA**

673 US Highway 1  
Vero Beach, FL 32962  
USA

[www.KlusDesign.com](http://www.KlusDesign.com)

### **Quotes / Valoraciones**

[quotations@klusdesign.com](mailto:quotations@klusdesign.com)  
(Tel.) 772 569 6655

### **Orders / Pedidos**

[orders@klusdesign.com](mailto:orders@klusdesign.com)  
(Tel.) 772 321 2260

KLUŚ products are proprietary and protected under U.S. and foreign patent laws.  
We reserve the right to change and modify our products.

