

PRODUCT DESCRIPTION

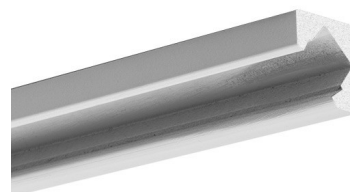
Small dimensions, 45 degree beam angel – directed array of light does not irritate the eyes of the potential user, lightweight, modern design, environment friendly.

Profile designed for inserting and mounting LED source of light into grooves and edges of all types of surfaces. The array of light is directed at 45 degree angle so that it does not irritate the eyes of the potential user.

- The profile directs light at a 45-degree angle
- Interior housing for flexible or hard LED strips that are 8-10 mm wide (0.39")

FINISH :

Grey MDF 



Fill empty fields

Product nr.	
Fixture type	
Company	
Job name	
Date	

TECHNICAL SPECIFICATION

Application

- for construction of directional lighting fixtures
- for mounting on surfaces and internal 90° corners in furniture and interiors.

Assembly

- on surfaces, with professional double-sided adhesive tapes and mounting adhesive

Additional information

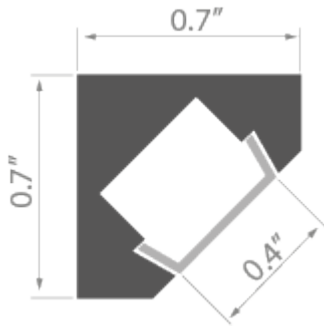
- possible to make a lighting fixture with a concealed source of light
- MDF extrusion cannot be exposed to extreme heat, humidity or water.

Turn off LED lights during peak day light hours in outdoor applications to avoid excessive heat buildup which will result in diminished LED life.

Application	furniture lighting
Application	niche/ cove lighting
Material	MDF
Finish	Grey MDF
place of installation	indoor installation
Mounting method	surface mount (simple installation)

Number of LED strips	1
----------------------	---

TECHNICAL DRAWING



RELATED PRODUCTS

COVERS



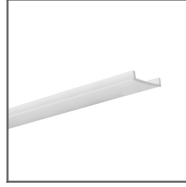
HS Cover clear
Ref: 1370

50°



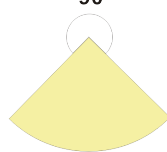
HS Cover frosted
Ref: 1369

100°



KA-BIS Cover
frosted
Ref: 17071

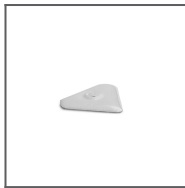
90°



END CAPS



3D 45-MDF End
Cap
Ref: 0959



3D 45-MDF End
Cap with hole
Ref: 1451