

PRODUCT DESCRIPTION

Easy and fast mounting of TRIADA fixture groove for cable routing

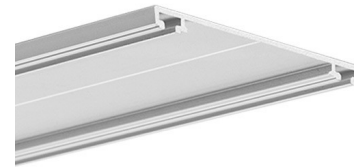
- Simplifies mounting a dedicated lighting fixture

FINISH :

Silver anodized

Fill empty fields

Product nr.	
Fixture type	
Company	
Job name	
Date	



TECHNICAL SPECIFICATION

Application

- mounting a dedicated lighting fixture by snapping it

Assembly

- surface mount with appropriately selected screws for the mounting surface
- the dedicated lighting fixture is snapped into the mounting strip

TETRA-43 mounting track is a low (0.16" / 4,3 mm) mounting strip for TRIADA extrusion. After TETRA-43 and TRIADA have been mounted, we obtain a low internal groove in which a (0.19" / 5 mm) Fi cable can be routed.

TRIADA extrusion is attached to TETRA-43 strip with TEKNIK clips, arranged in pairs. The pairs of the clips should be applied every (7.87" / 20 cm). TETRA-43 has its own end cap, which nicely complements the shape of TRIADA end cap.

TETRA-43 track is mounted using suitable screws. The location of the drilling of holes for screws is marked by the groove inside the extrusion. The mounting surface for TETRA-43 should be even. If there is some major roughness of the surface, mounting screws should be located in the places of extrusion-surface adhesion (bumps).

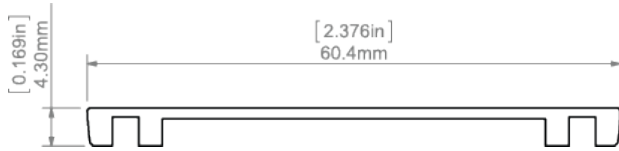
Additional information

- the space inside the strip is (0.12" / 3.1 mm)

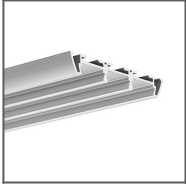
Application	mounting extrusions
Mounting method	Surface
Material	Aluminum
Finish	Silver anodized

place of installation	indoor installation
-----------------------	---------------------

TECHNICAL DRAWING



RELATED EXTRUSIONS



TRIADA Extrusion
Ref:
B4476ANODA

RELATED PRODUCTS

END CAPS



TETRA-43 End
cap
Ref: 24044

ACCESSORIES



BZP Head
Ref: 42213



BZP-ZZ Head
conductive
Ref: 42215



DP-ZZ Fastener
Ref: 00651



TEKNIK Clip
Ref: 24003



8,8x1,2 Gland
Ref: 00802