

PRODUCT DESCRIPTION

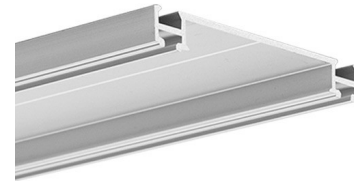
Easy and fast mounting of TRIADA fixture groove for cable routing

- Simplifies mounting a dedicated lighting fixture and provides space to conceal wires

FINISH :

Silver anodized

Fill empty fields



Product nr.	
Fixture type	
Company	
Job name	
Date	

TECHNICAL SPECIFICATION

Application

- mounting a dedicated lighting fixture with a cable gland

Assembly

- surface mounted with appropriately selected screws for the mounting surface
- the dedicated lighting fixture is snapped into the mounting strip

TETRA-78 mounting track is a mounting strip for TRIADA extrusion. After TETRA-78 and TRIADA have been mounted, we obtain a groove inside high enough to route (0.31" / 8 mm) Fi cables in it. TRIADA extrusion is attached to TETRA-78 strip with TEKNIK clips, arranged in pairs. The pairs of the clips should be applied every (7.87" / 20 cm).

TETRA-78 has its own end cap, which nicely complements the shape of TRIADA end cap. TETRA-78 track is mounted using suitable screws. The location of the drilling of holes for screws is marked by the groove inside the extrusion. The mounting surface for TETRA-78 should be even. If there is some major roughness of the surface, mounting screws should be located in the places of extrusion-surface adhesion (bumps).

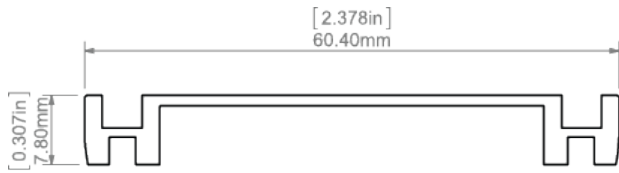
Additional information

- the space inside the strip is (0.25" / 6.6 mm)

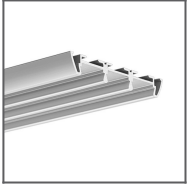
Application	mounting extrusions
Mounting method	Surface
Material	Aluminum
Finish	Silver anodized
place of installation	indoor installation

Mounting method	surface mount (simple installation)
-----------------	-------------------------------------

TECHNICAL DRAWING



RELATED EXTRUSIONS



TRIADA Extrusion
Ref:
B4476ANODA

RELATED PRODUCTS

END CAPS



TETRA-78 End
cap
Ref: 24043

ACCESSORIES



BZP Head
Ref: 42213



BZP-ZZ Head
conductive
Ref: 42215



DP-ZZ Fastener
Ref: 00651



TEKNIK Clip
Ref: 24003